

www.cobmac.com

MACHINE IS OUR JOB

CONCRETE BLOCK, INTERLOCK,
INSULATED BLOCKS, CURBSTONE AND
SPECIAL BLOCK MACHINES
AND FACTORY MANUFACTURING.

cobmac[®]
concrete block machine company

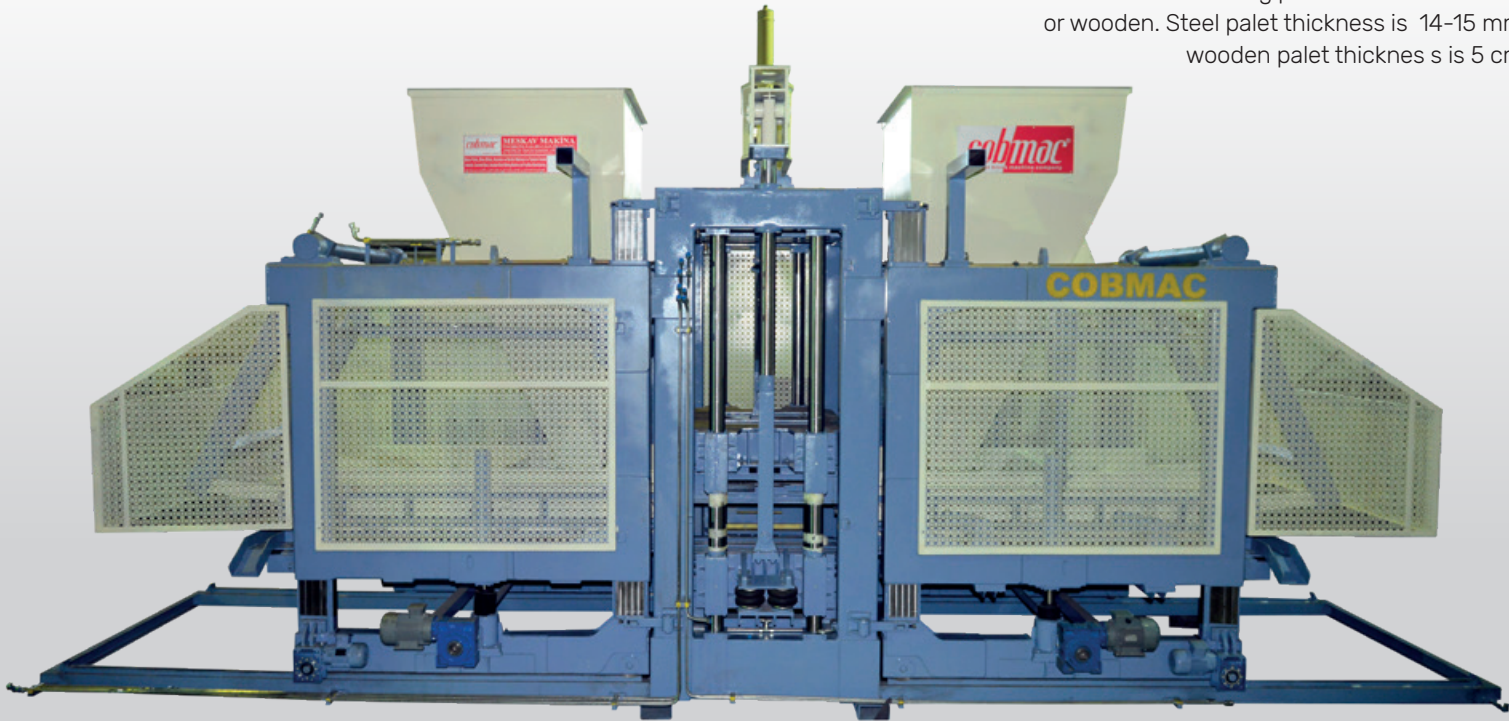


COB1842

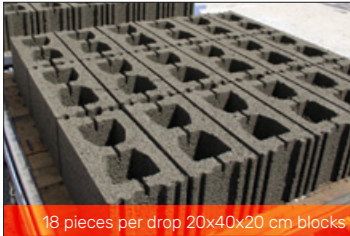
FULLY AUTOMATED BLOCK and INTERLOCK FACTORY

2750-3000 Blocks / Per Hour
180-200 Sqm. Interlock / Per Hour

This machine was designed for fully automated factory. It can works with finger, elevator and curing chamber. It has 16-20 second cycle time. Manufacturing palet can be used steel or wooden. Steel palet thickness is 14-15 mm, wooden palet thicknes s is 5 cm.



TECHNICAL SPECIFICATIONS	COB 1842
Operation	Automatic
Machine Size (WxHxL)	2,5x4,5x8,2m
Machine Weight	25 tons
Pallet Size	140x130x5 cm
Machine Cycle Time	Min. 16 second, Max. 20 second
Vibrations Bottom Upper Mould	4x7.5 kw x 3.000 rpm (120 KN) 2x1.5 kw x 3.000 rpm
Required Batching EQ	2 CBM Mixer + 0,5 CBM Color Mixer
Capacity	2.750-3.000 Blocks/per hour, 175 sqm per hour
Products Height	Min 5 cm - Max. 40 cm
Productions Are	130x130 cm
Capacity Per Press	18 Blocks for 20x40x20 cm, 42 pcs Interlocks, 90 pcs Solid Bricks 6x12x25 cm



COB1236

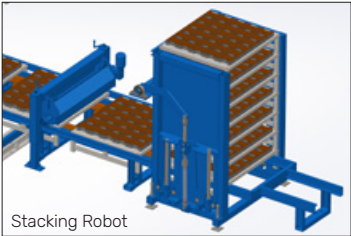
FULL AUTOMATIC BLOCK and INTERLOCK FACTORY

2000-2250 Blocks / Per Hour
150-170 Sqm. Interlock / Per Hour

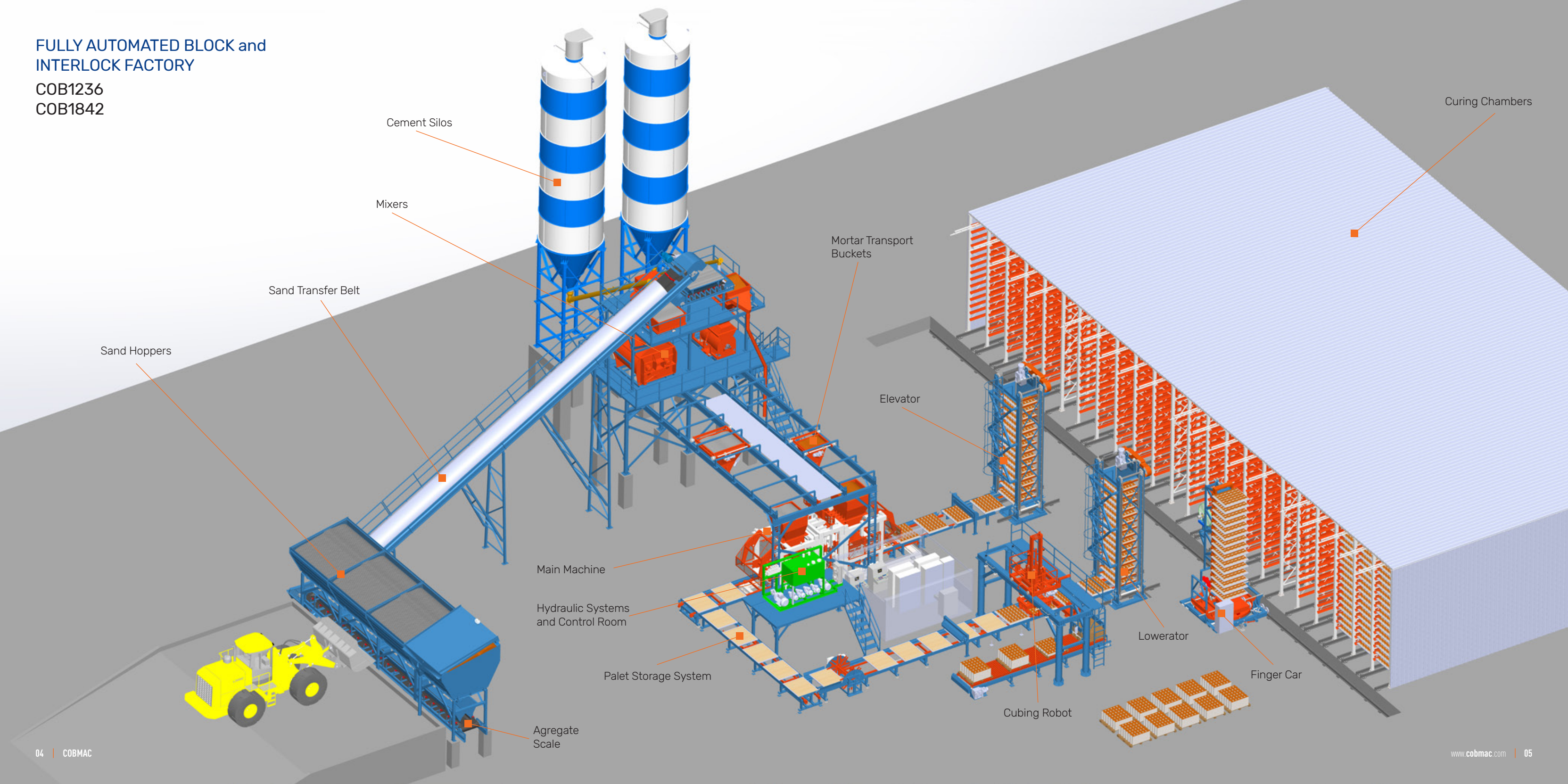
This machine was designed for full automatic factory. It can works with finger, elevator and curing chambers or with stacking robot and forklift transport for fresh and dry product. It has 18-20 second cycle time. Manufacturing palet can be used steel or wooden. Stell thickness is 14-15 mm, wooden thickness is 5 cm.



TECHNICAL SPECIFICATIONS	COB 1236
Operation	Automatic
Machine Size (WxHxL)	2,5x4,5x8 m
Machine Weight	24 tons
Pallet Size	145x115x5 cm
Machine Cycle Time	Min. 16 second, Max. 20 second
Vibrations Bottom Upper Mould	4x5.5 kw x 3.000 rpm (96 KN) 2x1.5 kw x 3.000 rpm
Required Batching EQ	2 CBM Mixer + 0,35 CBM Color Mixer
Capacity	2000-2250 Blocks/per hour, 140-160 sqm per hour
Products Height	Min 5 cm - Max. 40 cm
Productions Are	130x110 cm
Capacity Per Press	12-15 Blocks for 20x40x20 cm, 36 pcs Interlocks, 72 pcs Solid Bricks, 6x12x25 cm

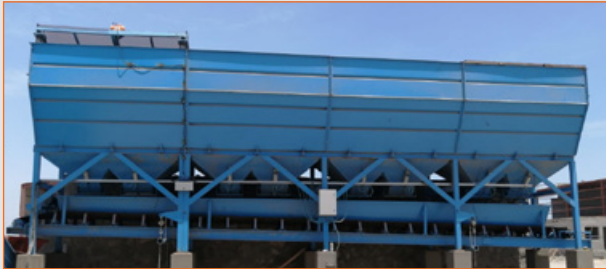


FULLY AUTOMATED BLOCK and
INTERLOCK FACTORY
COB1236
COB1842



AUTOMATED BLOCK and
INTERLOCK FACTORY
WITH BASKET SYSTEM

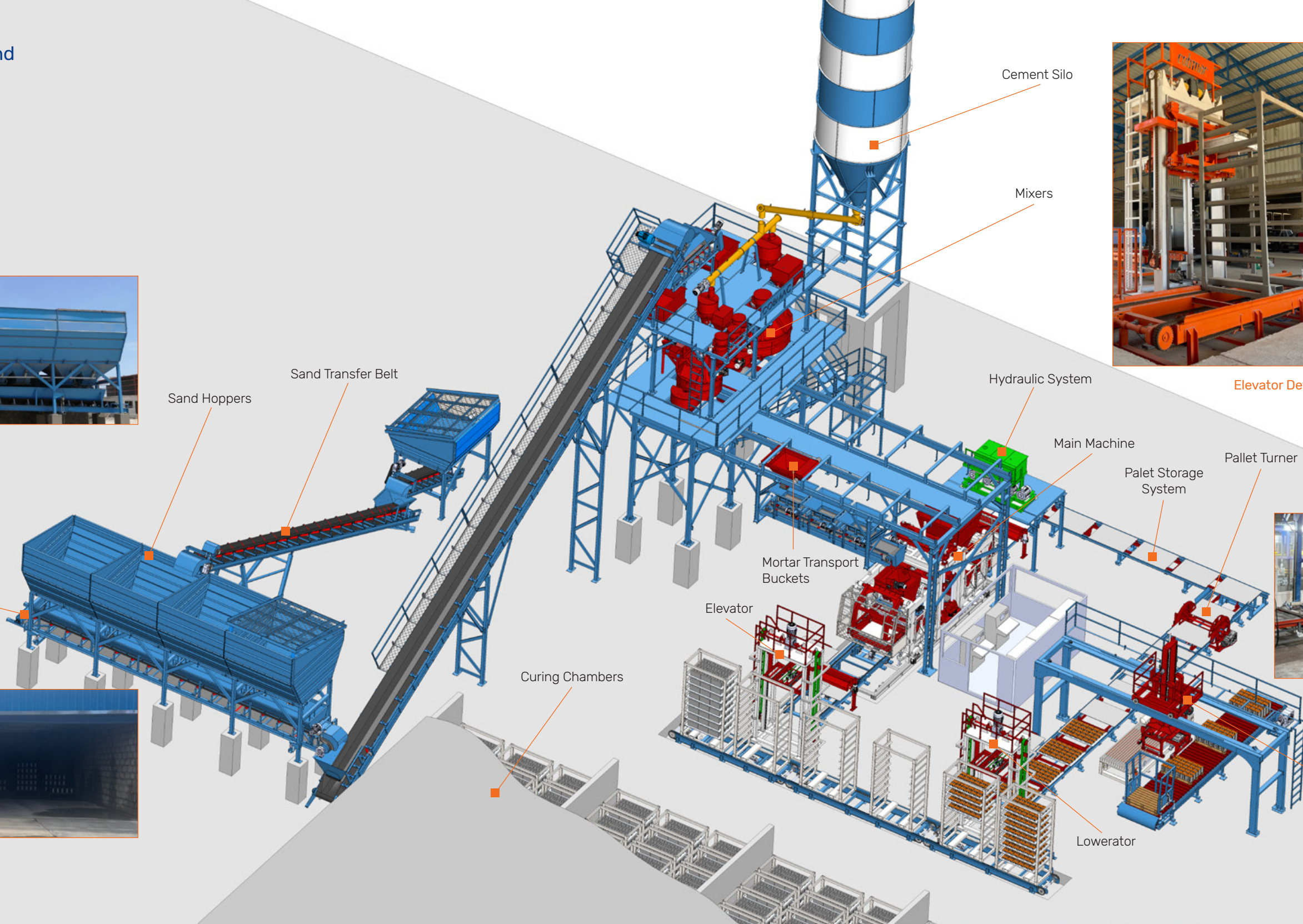
COB1230
COB1230 MC
COB1236
COB1842



Bunker Details



Curing Room



Elevator Details



Basket Details



Cuber Details

AUTOMATED BLOCK and
INTERLOCK FACTORY

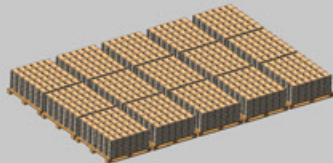
COB1230
COB1230 MC
COB1236
COB1842



Batching System



Mixer's Platform



Stacking Robot

Main Machine

Cement Silos

Color Scale

Mixers

Sand Hoppers

Mortar Transport Buckets

Sand Transfer Belt

Agregate Scale

Hydraulic Systems and Control Room

Cubing Robot



Pallet With Legs

COB1230 / COB1025

AUTOMATIC or SEMI-AUTO BLOCK and INTERLOCK FACTORY

1300-1500 Blocks / Per Hour
100-120 Sqm. Interlock / Per Hour

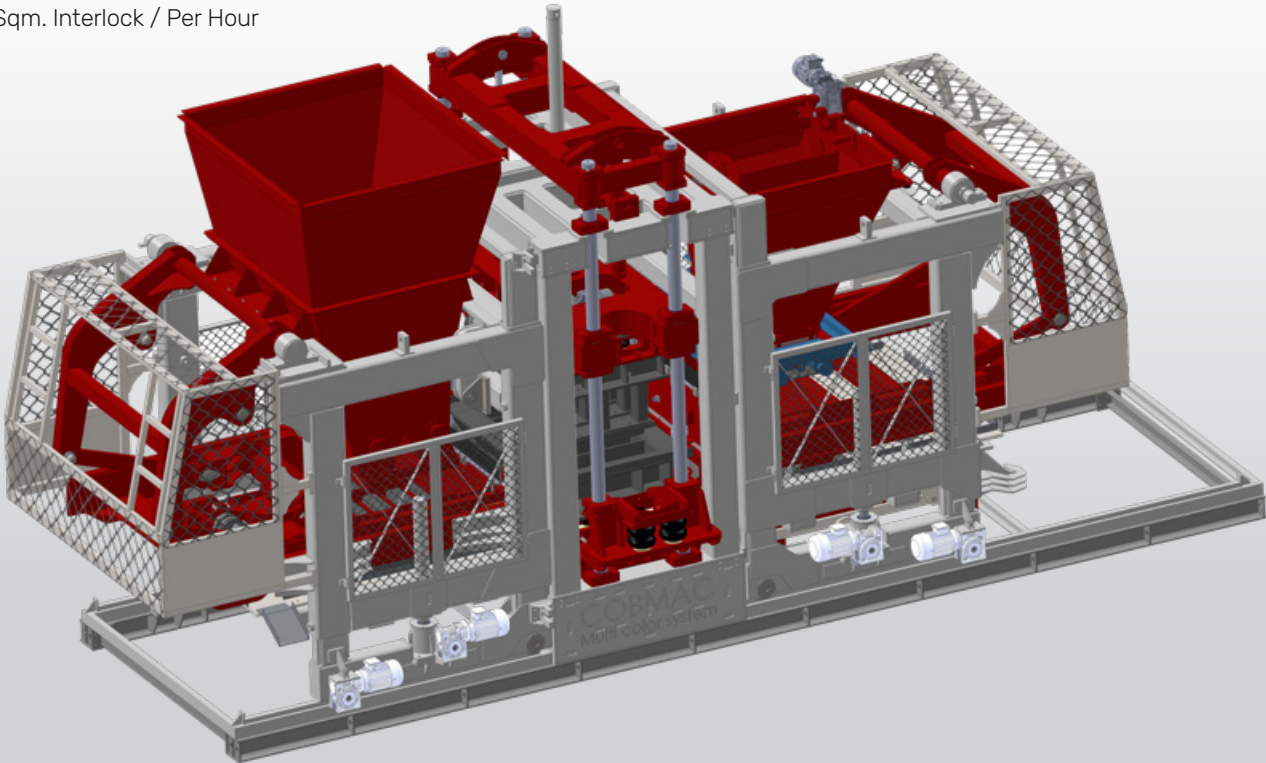


This machine is designed interlocks, blocks, insulated blocks, curbtones. It can produce 30 pcs interlocks, 12.5 pcs block for 20x40x20 cm, 3 or 5-6 curbtones in a press. Cycle time is 18 to 22 second. It is automatic and semi automatic. Machine can be use with stacking system or without stacking system. It has 6 vibrators, 4 pcs is under of the mould, 2 pcs is upper of the mould. Stacked pallet must be transport with forklift for machines with stacking system. Machine can be press on the wooden pallet. Wooden pallet is made by pine with covered steel. There are two type of mortar system. It is manual and automatic weighing system.

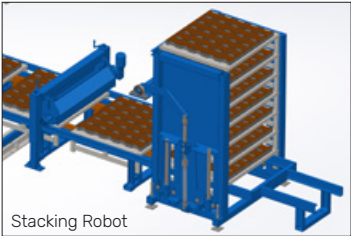
COB1230 MC

AUTOMATIC MULTICOLOR INTERLOCK and BLOCK MAKING FACTORY

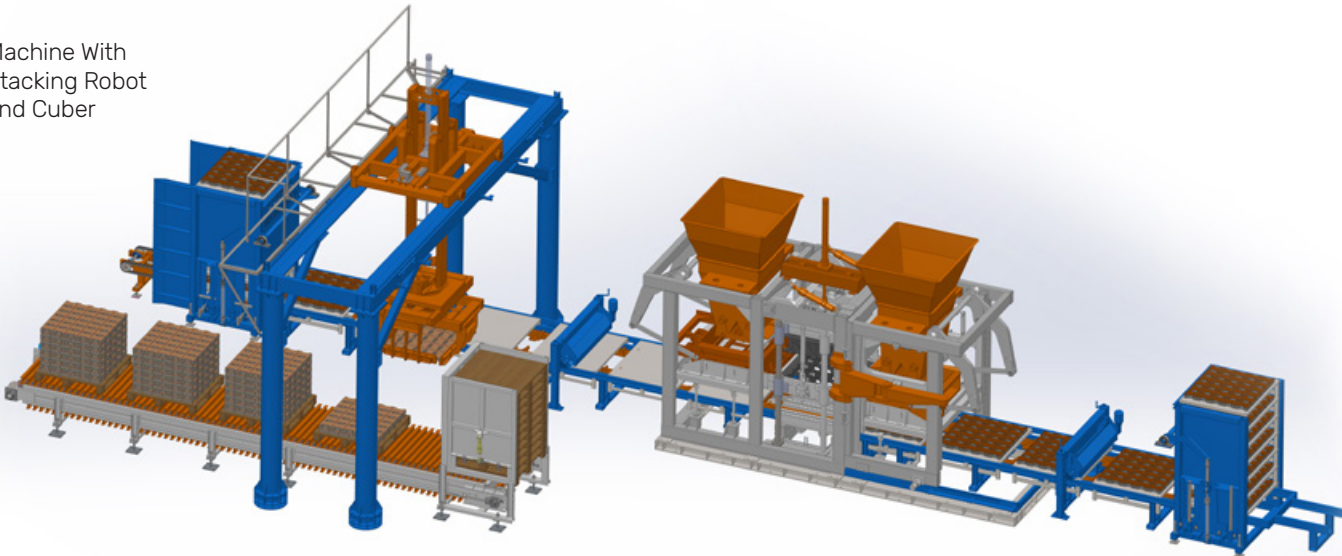
1300-1500 Blocks / Per Hour
100-120 Sqm. Interlock / Per Hour



TECHNICAL SPECIFICATIONS	COB 1230/COB 1025
Operation	Automatic
Machine Size (WxHxL)	2,5x3,5x8 m
Machine Weight	12 tons
Pallet Size	125x110x4.5 cm / 125x98x4.5 cm
Machine Cycle Time	Min. 18 second, Max. 22 second
Vibrations Bottom	4x5.5 kw x 3.000 rpm (64 KN)
Upper Mould	2x1 kw x 3.000 rpm
Required Batching EQ	1 CBM Mixer + 0,35 CBM Color Mixer
Capacity	1300-1500 Blocks/per hour, 100-120 sqm per hour
Products Height	Min 5 cm - Max. 30 cm
Productions Are	110x110 cm
Capacity Per Press	10-12 Blocks for 20x40x20 cm, 25-30 pcs Interlocks, 64 pcs Solid Bricks, 6x12x25 cm



Machine With Stacking Robot and Cuber

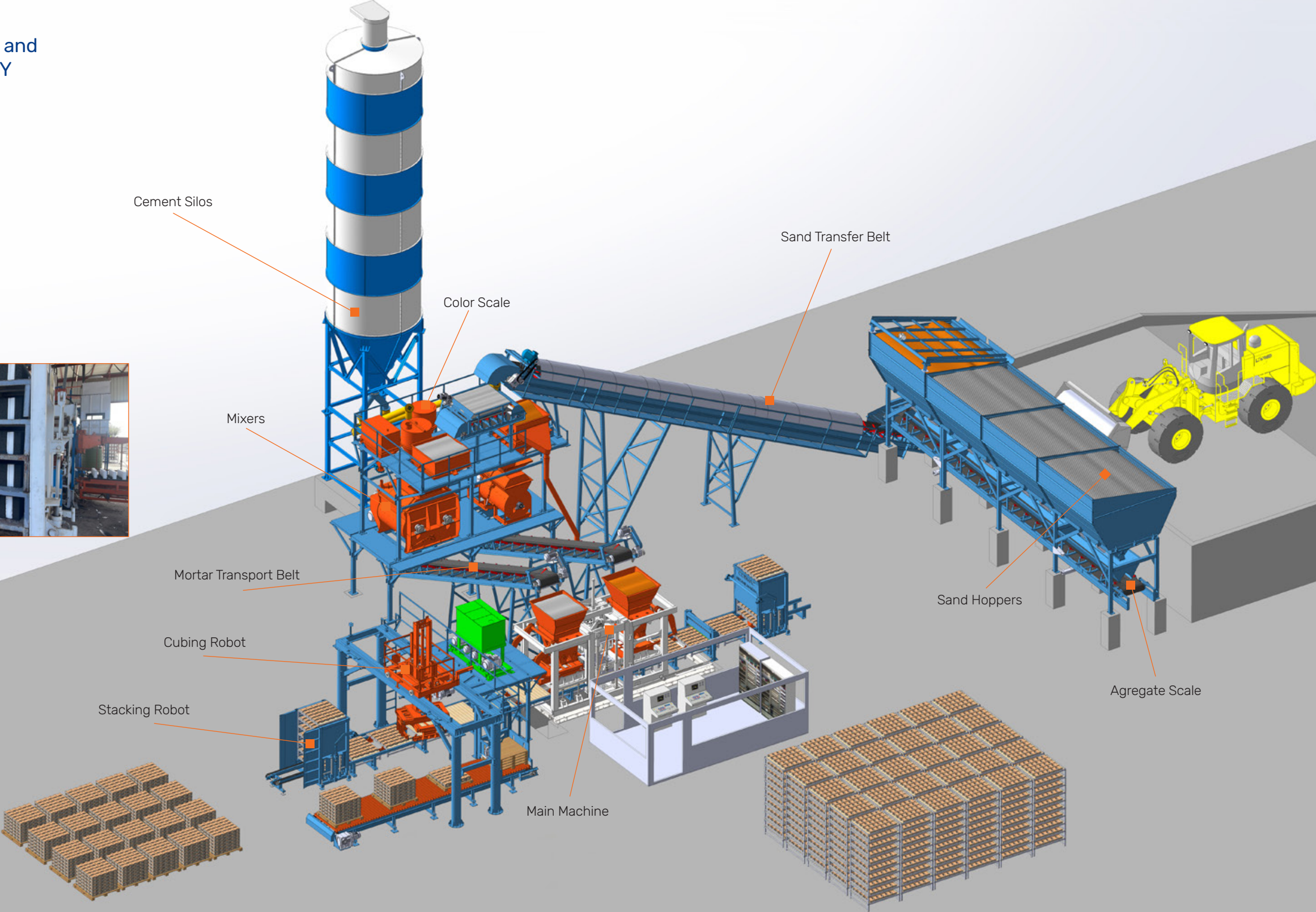


AUTOMATED BLOCK and
INTERLOCK FACTORY

COB1230
COB1025
COB618
COB518



Isolated Block

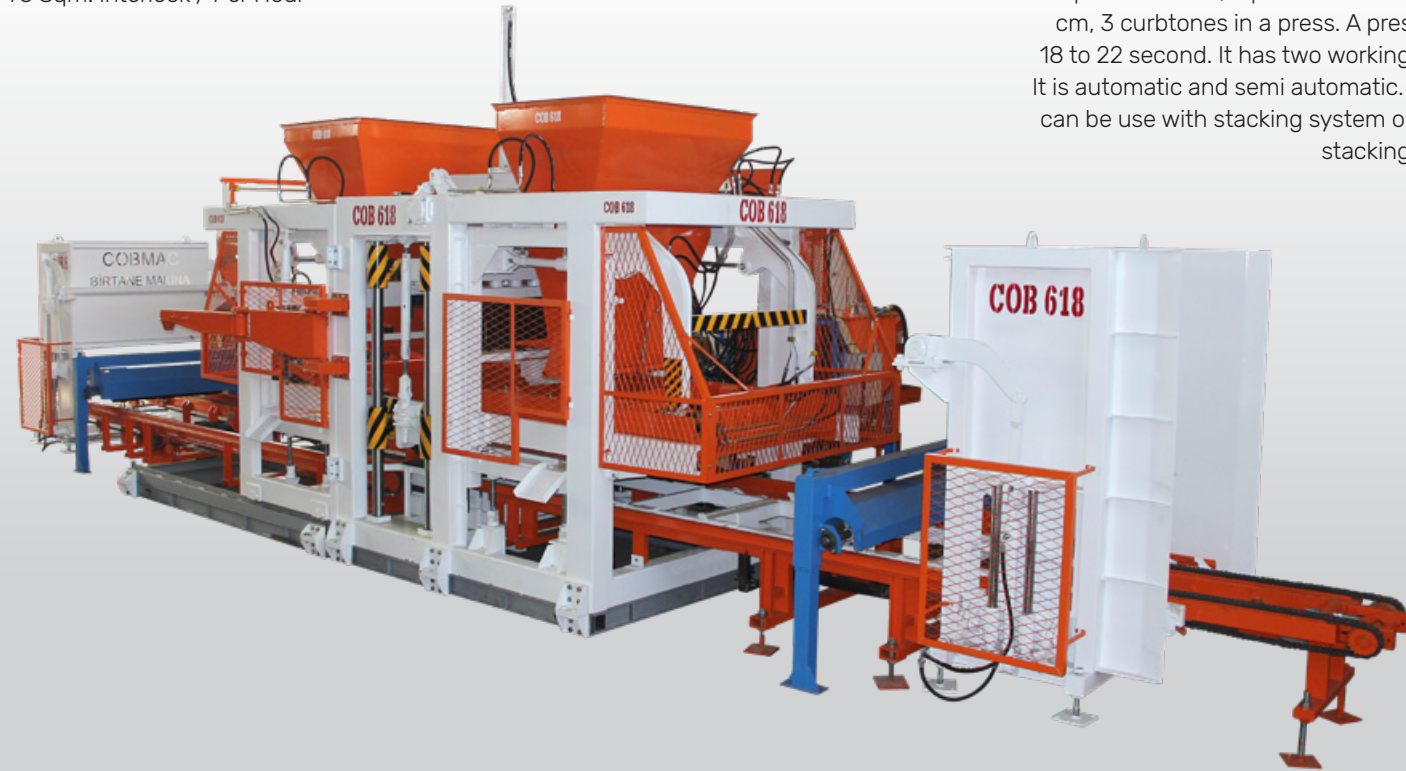


Pallet With Legs

COB918 / COB618

AUTOMATIC AND SEMI AUTOMATIC BLOCK and INTERLOCK FACTORY

900-1200 Blocks / Per Hour
75 Sqm. Interlock / Per Hour

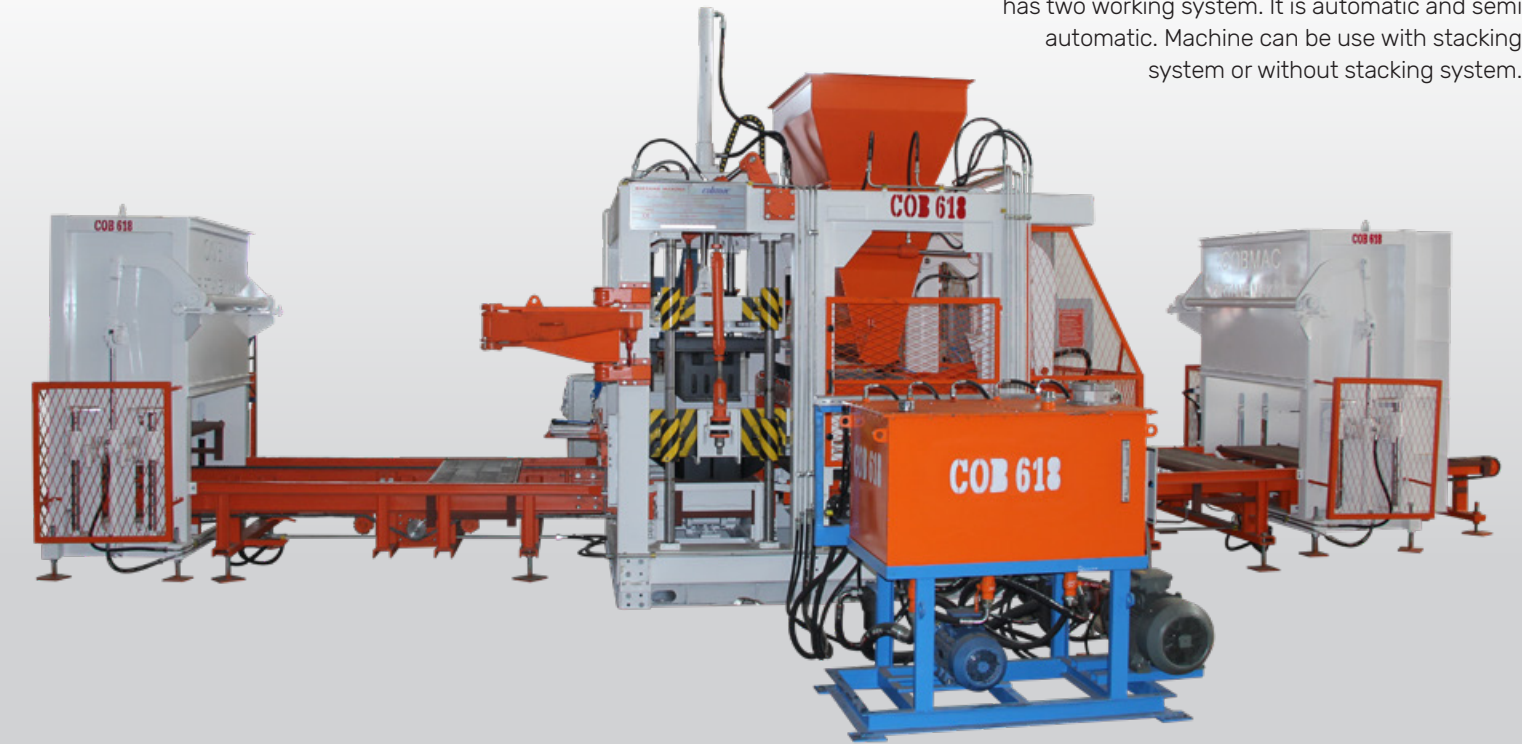


This machine is designed interlocks, blocks, insulated blocks, curbtone. It can produce 18 pcs interlocks, 6 pcs block for 20x40x20 cm, 3 curbtone in a press. A press time is 18 to 22 second. It has two working system. It is automatic and semi automatic. Machine can be use with stacking system or without stacking system.

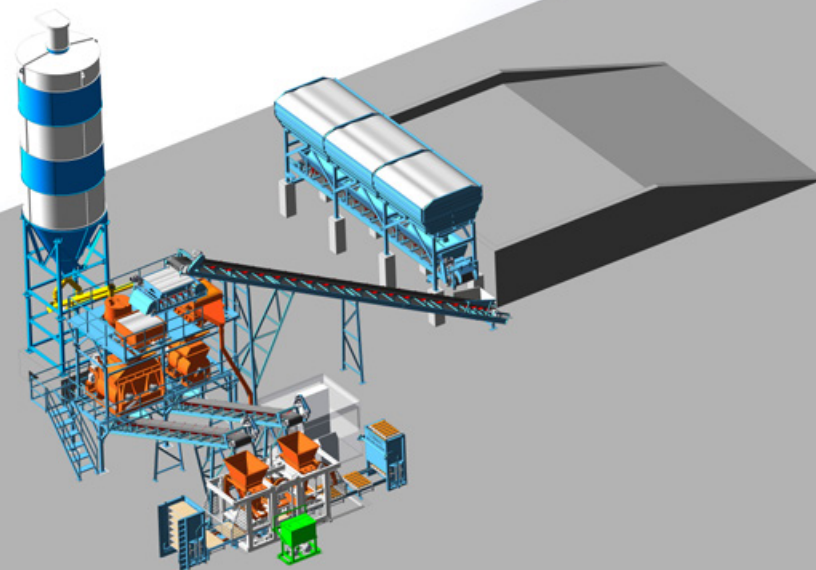
COB918 / COB618

AUTOMATIC AND SEMI AUTOMATIC BLOCK FACTORY

900-1200 Blocks / Per Hour



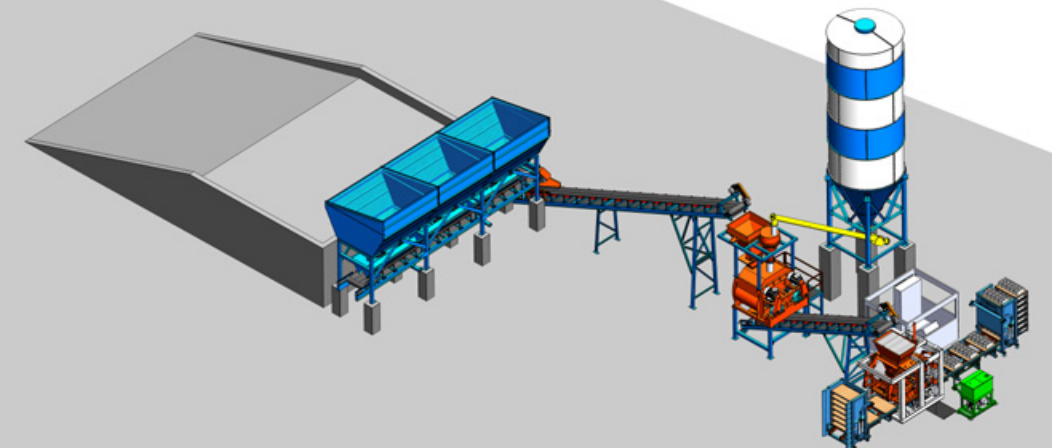
This machine is designed blocks and insulated blocks. It can produce 6 pcs or 9 pcs block for 20x40x20 cm. A press time is 18 to 22 second. It has two working system. It is automatic and semi automatic. Machine can be use with stacking system or without stacking system.



9 pcs for 20x40x20 cm



6 pcs for 20x50x20 cm



COB518

AUTOMATIC AND SEMI AUTOMATIC BLOCK FACTORY

500-600 Blocks / Per Hour
50 Sqm. Interlock / Per Hour

This machine is designed interlocks, blocks, insulated blocks, curbstones. It can produce 18 pcs interlocks, 5 pcs block for 20x40x20 cm, 2 or 3 curbstones in a press. A press time is 25 to 35 second. It has two working system. It is automatic and semi automatic. Machine can be use with stacking system or without stacking system.



COB412

AUTOMATIC AND SEMI AUTOMATIC BLOCK FACTORY

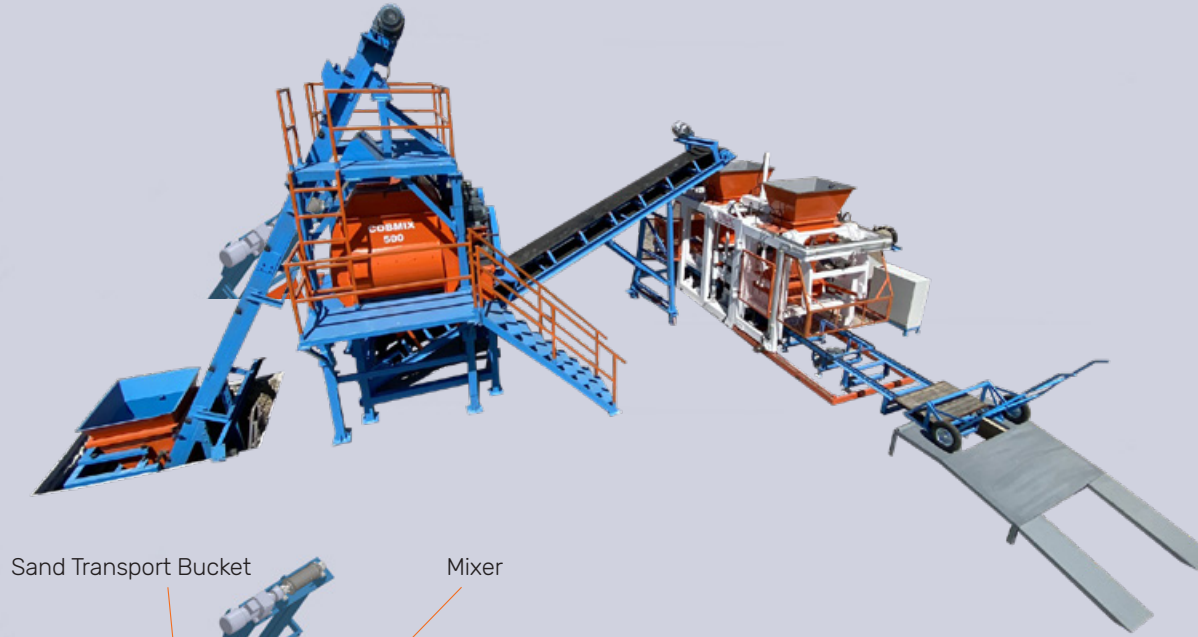
400-500 Blocks / Per Hour
40 Sqm. Interlock / Per Hour

This machine is designed interlocks, blocks, insulated blocks, curbstones. It can produce 12 pcs interlocks, 4 pcs block for 20x40x20 cm, 2 or 3 curbstones in a press. A press time is 25 to 35 second. It has two working system. It is automatic and semi automatic. Machine can be use with stacking system or without stacking system.



SEMI BLOCK and INTERLOCK FACTORY

300-400-500 Blocks / Per Hour



Sand Transport Bucket

Mixer

Conveyor Belt

Stacking Robot

Machine

Unstacking Robot

COB39

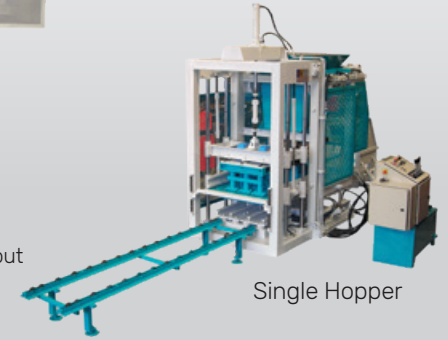
SEMI AUTOMATIC INTERLOCK and MAKING MACHINE

300-350 Blocks / Per Hour
30 Sqm. Interlock / Per Hour

This machine designed for manual machine user and only block manufacturer. Machine can be double hopper for interlock and curbstone manufacturing.



System : Semi automatic manual operation or PLC operation
Mould : 9 pcs Interlocks, 3 pcs Blocks for 20X40X20 With Stacking System or Without
Vibrators : Bottom: 2 x 4KW x 3000RPM
Upper : 2X0.37 KW 450 KGS / RPM



COB26

BLOCK and INTERLOCK MACHINE

100-150 Blocks / Per Hour
15 Sqm. Interlock / Per Hour

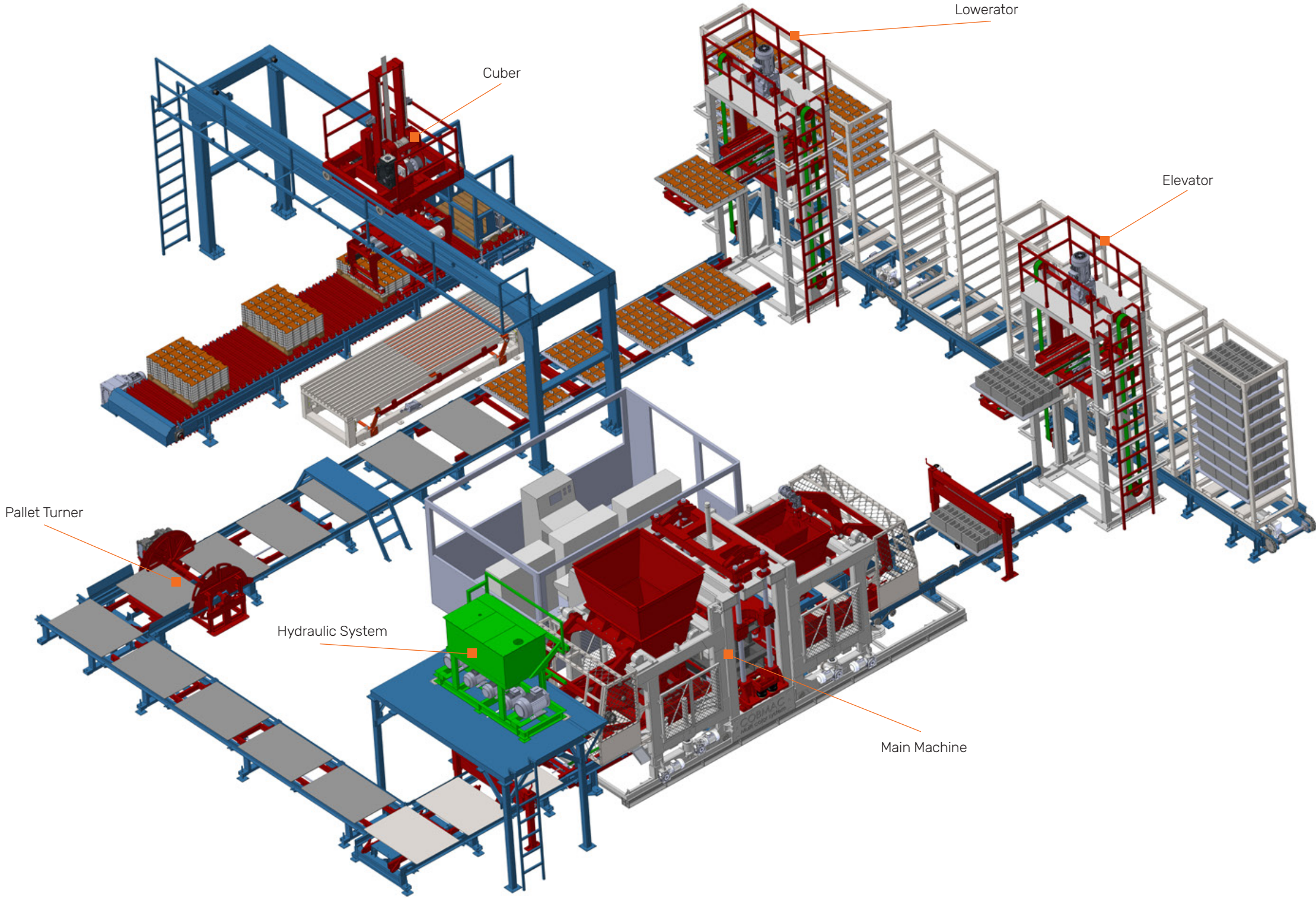
- This small block macking machine
- It can work on the wooden pallet
- All moving by hydraulic
- There is one set vibrations
- Machine has one hopper, you can not produce double layer interlock. Only one layer interlock
- Vibration motor power 3 kw and 3.000 rpm and 0.37 kw x3000 rpm
- Hydraulic motor and pump 3 kw and 11 cc. Motor Gamak brand name in Turkey
- You can produce height is between 6 to 20 cm block and interlock
- Required two labours
- Apprx. 500 cycle in 8 hours
- It can produce 2 blocks 20x40x20 cm or 6 interlock in one cycle
- Box is 1.5x1.5x2m weight:1.550 kgs
- Electrical pannel included, ready for start
- Total electric power 4 kw/h, 15 or 20 kw generator in enough



BASKET SYSTEM MACHINE



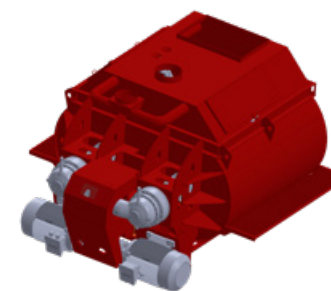
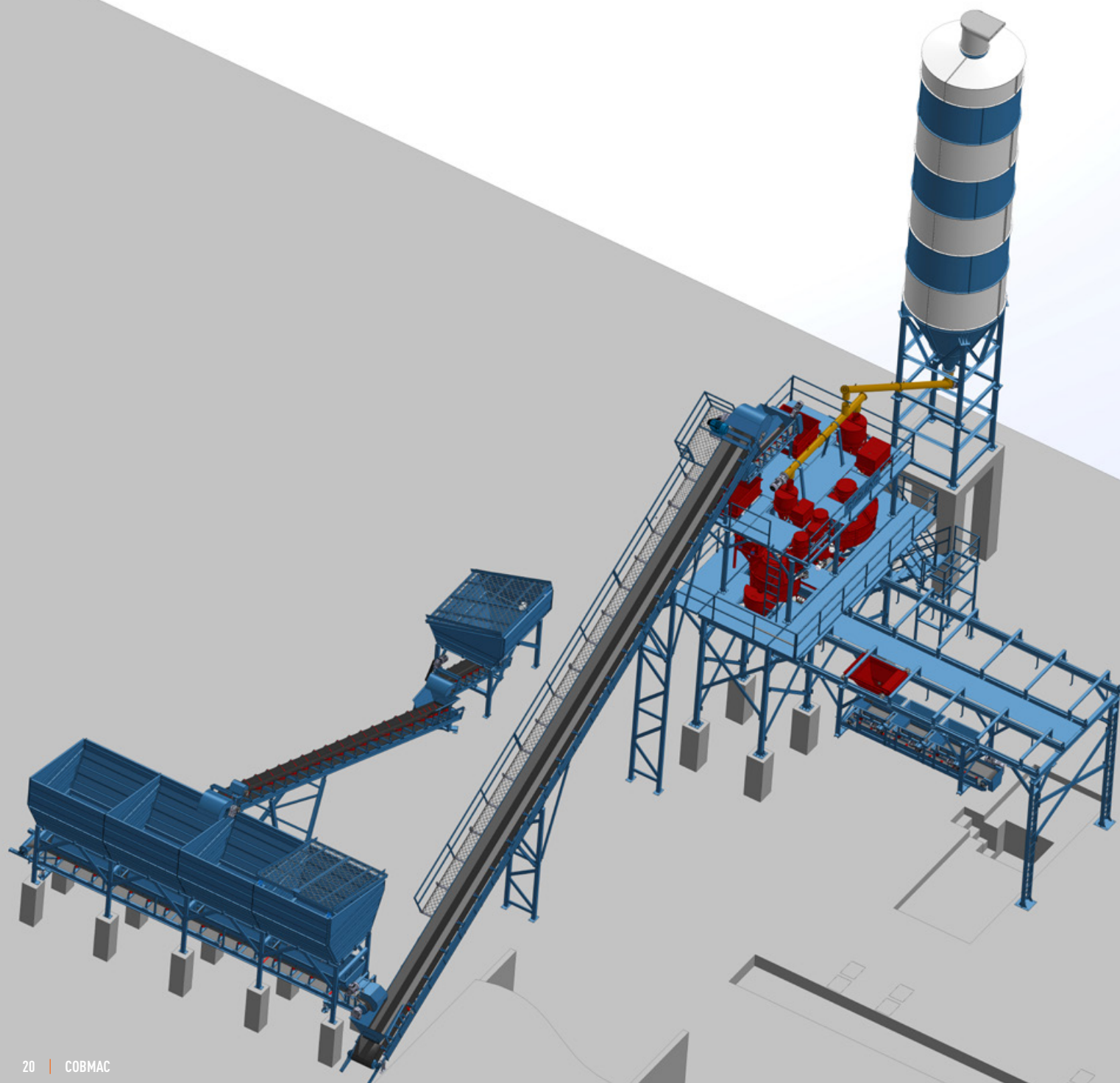
Cubing Robot Details



Elevator Details



Basket Details



COBMIX 3000 TWIN SHAFT MIXER

- Mixing capacity: 3 m³
- Motor power 2x45 kw
- Gearbox. Bonfiglioli type
- Main body 15 mm

COBMIX 2000 TWIN SHAFT MIXER

- Mixing capacity: 2 m³
- Motor power 2x37 kw
- Gearbox. Brevini/Rossi type
- Main body 15 mm



COBMIX 1000 TWIN SHAFT MORTAR MIXER

- Mixing capacity: 1 m³
- Motor power 2x30 kw
- Gearbox. Helix type output: 26.500 N
- Main body 10 mm

COBMIX 500 TWIN SHAFT MIXER

- Mixing capacity: 500 dm³
- Motor power 2x22 kw
- Gearbox. Dişsan
- Main body 10 mm



COBMIX 350/200 FACEMIX MIXER

- Mixing capacity: 500 dm³
- Motor power 2x22 kw
- Gearbox. Helix type output: 26.500 N
- Main body 10 mm

COBMIX 2000 PLANETRY MIXER

- Mixing capacity: 2 m³
- Motor power 90 kw
- Cobra Planetry Gearbox 3 Star
- Main body 15 mm



COBMIX 1500 PLANETRY MIXER

- Mixing capacity: 1.5 m³
- Motor power 75 kw
- Cobra Planetry Gearbox 2 Star
- Main body 15 mm



COBMIX 1000 PLANETRY MIXER

- Mixing capacity: 1 m³
- Motor power 45 kw
- Cobra Planetry Gearbox 2 Star
- Main body 15 mm



COBMIX 750 PLANETRY MIXER

- Mixing capacity: 750 dm³
- Motor power 30 kw
- Cobra Planetry Gearbox 1 Star
- Main body 10 mm



COBMIX 500 PLANETRY MIXER

- Mixing capacity: 500 dm³
- Motor power 22 kw
- Cobra Planetry Gearbox 1 Star
- Main body 10 mm



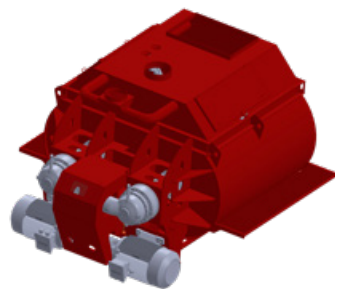
COBMIX 330 PLANETRY MIXER

- Mixing capacity: 330 dm³
- Motor power 18,5 kw
- Cobra Planetry Gearbox 1 Star
- Main body 10 mm



COBATCH 120 CONCRETE BATCHING PLANT

60, 90, 120, 150, 180 CBM BATCHIN PLANT



COBMIX 3000

TWIN SHAFT MIXER

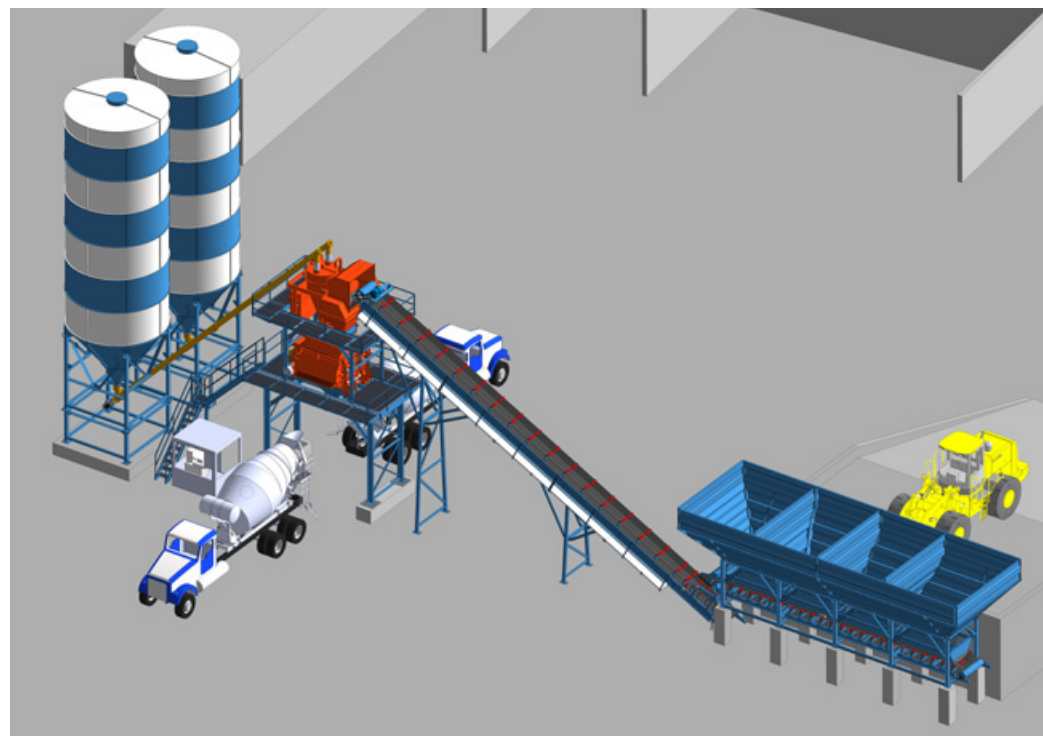
- Mixing capacity: 3 m³
- Motor power 2x45 kw
- Gearbox. Bonfiglioli type
- Main body 15 mm



COBMIX 2000

TWIN SHAFT MIXER

- Mixing capacity: 2 m³
- Motor power 2x37 kw
- Gearbox. Brevini/Rossi type
- Main body 15 mm



CONCRETE BATCHING PLANT TECHNICAL SPECIFICATION

CAPACITY OF BATCHING PLANT

Concrete Capacity Per Hour (m ³ /h)	120
--	-----

MIXER SPECIFICATION

Mixer Mixing Capacity (m ³ /h)	2 m ³
Motor Power (Kw)	2x37
Mixer Type	Twin Shaft

AGREGATE HOPPER

Bin Quantity	3-Nis
Bin Capacity	20 m ³
Total Capacity	60/80 m ³

AGREGATE WEGHING BELT

Weight (M)	1.000
Lenght (M)	11.200
Motor Power (Kw)	7.5

SAND TRANSPORT BELT

Weight (M)	800
Lenght (M)	26.800
Motor Power (Kw)	18.5

WEIGHING CAPACITY

Aggregate Weighing Capacity (Kg)	2500
Cement Weighing Capacity (Kg)	2000
Water Scale Capacity (Kg)	500
Additive Scale Capacity (Kg)	50

SCREW CONVEYOR

Screw Diameter (mm)	273
Lenght (mm)	9.000
Motor Power (Kw)	11

CEMENT SILO

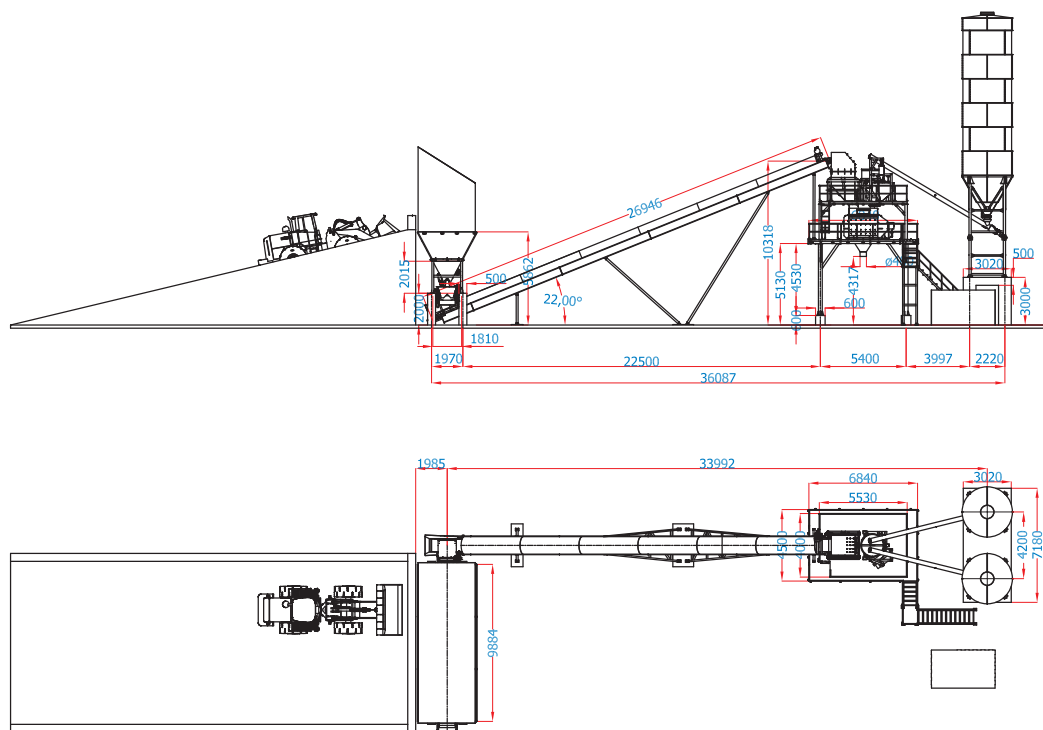
Capacity (Ton)	100
Quantity	2

COMPRESSOR

Capacity (Lt)	500
Working Pressure (Bar)	8
Motor Power (Kw)	5.5

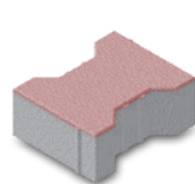
WATER PUMP

Capacity (m ³ /h)	2.4
Motor Power (Kw)	0.37



PRODUCTS

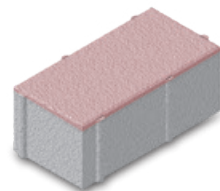
PAVERS



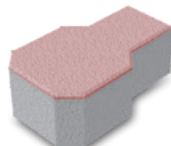
CBC-i-8



CBC-c-10



CBC-r-6

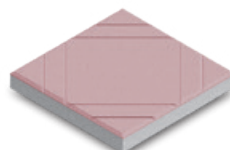


CBC-d-6

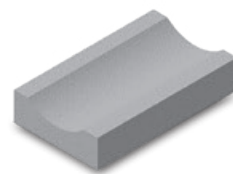
COB 1230 Capacity is 650 sqm/per/8 hour
COB 412 Capacity is 250 sqm/per/8 hour



CBC-h-20



CBC-p-40x40



CBC-y-26x40

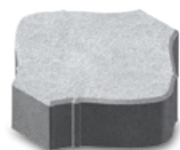


CBC-g-40x60

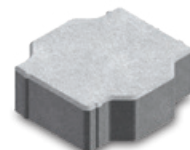
COB 39 Capacity is 200 sqm/per/8 hour
COB 26 Capacity is 100 sqm/per/8 hour



CBC-z-8



CBC-e-8

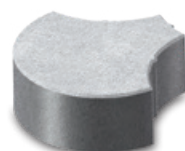


CBC-oi-8

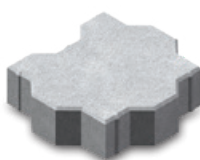


CBC-t-8

CURBSTONE



CBC-m-8



CBC-a-8



CBC-18x30x70



CBC-15x30x50

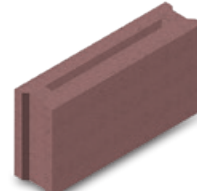
PRODUCTS

10x40x20 cm BLOCKS

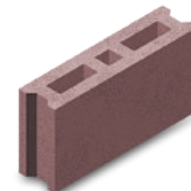
2.000 / 5.000 / 12.000 / 17.000 / 30.000 pcs/8 hour



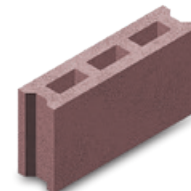
CBC-10s



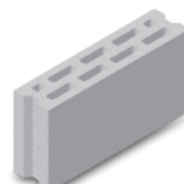
CBC-s-10



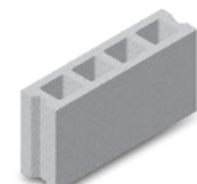
CBC-10-1-3a



CBC-10-1-3



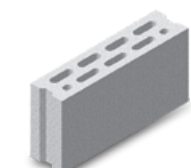
CBC-10-2-9



CBC-10-1-4



CBC-10-4-1



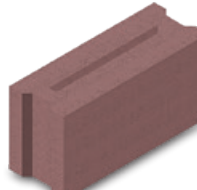
CBC-10

15x40x20 cm BLOCKS

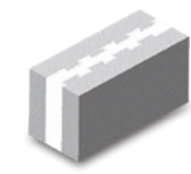
1.500 / 3.500 / 10.000 / 12.000 / 24.000 pcs/8 hour



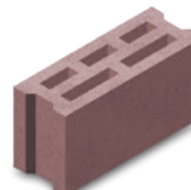
CBC-15s



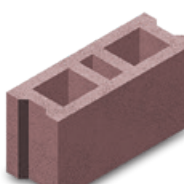
CBC-s-15



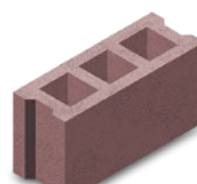
CBC-ins-15



CBC-15-2-5



CBC-15-1-3a



CBC-15-1-3



CBC-12s



CBC-20

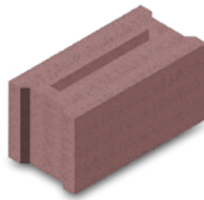
PRODUCTS

20x40x20 cm BLOCKS

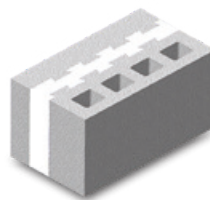
1.000 / 3.200 / 8.000 / 10.000 / 20.000 pcs/8 hour



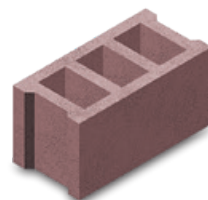
CBC-20s



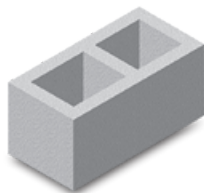
CBC-s-20



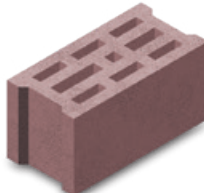
CBC-ins-20



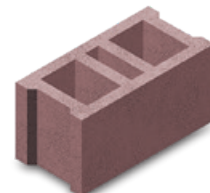
CBC-20-1-3



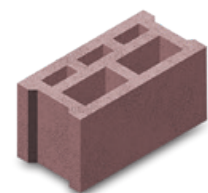
CBC-20-1-2



CBC-20-3-9



CBC-20-1-3a



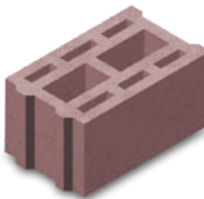
CBC-20-2-3

25x40x20 cm BLOCKS

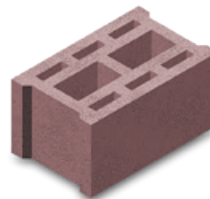
800 / 2.800 / 6.000 / 8.000 / 16.000 pcs/8 hour



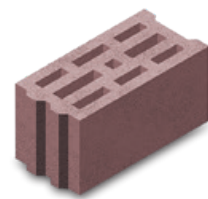
CBC-25s



CBC-25-3-8g



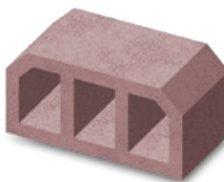
CBC-25-3-8



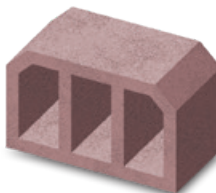
CBC-20-3-9g

HOURLIES

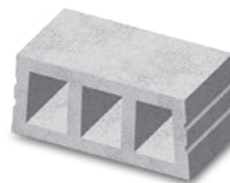
HOURLY



CBC-20-a



CBC-25-a



h18



h24

PROFESSIONAL TEAM
HIGH EFFICIENCY
LATEST TECHNOLOGY
EQUIPMENTS

CONCRETE BLOCK,
INTERLOCK,
INSULATED BLOCKS,
CURBSTONE AND
SPECIAL BLOCK MACHINES
AND FACTORY MANUFACTURING.



BİRTANE MAKİNA
NAK. BİLG. İNŞ. SAN. VE TİC. LTD. ŞTİ.

Saray Mahallesi Keresteciler Sanayi Sitesi
18. Sokak No: 12 K.Kazan-ANKARA/TURKEY

T. +90 312 815 25 00 | **F.** +90 312 815 25 02

E. cobmac@cobmac.com

www.cobmac.com